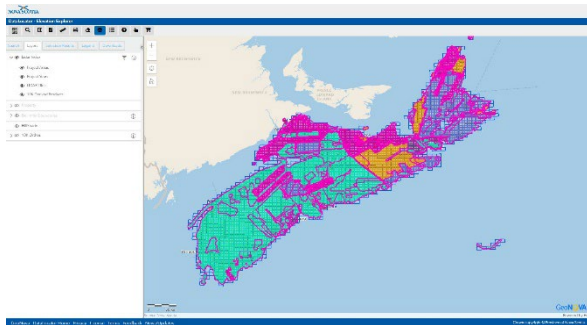




Nova Scotia LiDAR

Elevation Explorer



Through Partnerships with various Provincial and Federal Departments' the Province of Nova Scotia is pleased to offer readily available LiDAR data.

Check out [DataLocator – Elevation Explorer](#) to view the current coverage of our LiDAR data available for Nova Scotia. Elevation Explorer allows users to easily select and download available tiles self-serve on demand. Using the identify tool from the applications toolbar you can access the metadata fields available for each tile.

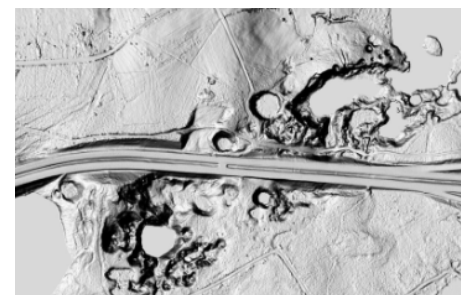


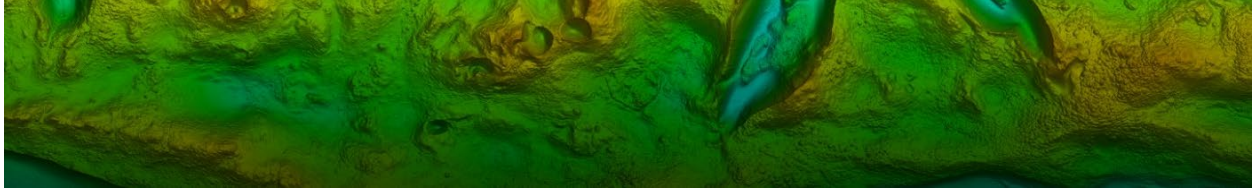
The Importance of LiDAR to Nova Scotia

- LiDAR has both economic value and impacts forest inventory, flood risk management, Archeology, Utility, Highway and Municipal Mapping etc.
- LiDAR is essential to many federal and provincial responsibilities: topographic mapping; flood risk management; coastal erosion; Geological mapping; Aquaculture, etc.
- LiDAR yields a more highly accurate source of elevation values than more traditional photogrammetry.

Available LiDAR Products

- Classified Point Cloud (LAZ)
- (Hydro Flattened) Digital Elevation Model (DEM)
- Raw Digital Elevation Model (RAW DEM)
- Digital Surface Model (DSM)
- Canopy Height Model (CHM)
- Intensity (INT)
- Hillshade (HILL)
- [Raster Product Descriptions](#)





I want to download many LiDAR files from the DataLocator – Elevation Explorer. Is there a way to receive a large number of tiles?

The [Elevation Explorer](#) allows for downloading freely available LIDAR Elevation data and its derived 10k products. A client can choose the datasets in the area of interest, and the client then downloads the data one file at a time. If there is a need for a large volume of this data, Geographic Information Services Client Support does provide a service to copy multiple LIDAR and/or Derived Product tiles to a client's external hard drive. Due to security requirements, the hard drive that you provide would have to be unopened in its original factory form packaging. Please provide a shapefile covering your area of interest to allow us to determine the file size requirements. Please know that the Elevation Data can consume Terabytes of disk space. The fee for preparing a hard drive with your custom data request is \$34.30 + tax. [Contact us](#) for more information.



LiDAR Derived Contours

Contours are available for download from the [DataLocator – Geographic Data Directory](#). Look for the Nova Scotia Topographic Database – Landforms option. Ensure that in accordance with our [news release](#) that you are selecting NAD83(CSRS)v6 as the download or map service as v3 is only there as a legacy dataset and does not contain the contours as such.

